

2021

Elite
CATTLE CO

CHAROLAIS | SIMMENTAL | SIM-ANGUS

ON-PROPERTY &
ONLINE **BULL SALE**

Thursday, 2nd September

Welcome

We are excited to invite you to our 4th Annual On-Property Bull Sale at 'Murwollock'!

As we write this, there has never been a better time to be involved in the beef industry. After battling through some of the worst seasons on record, it is great to see producers getting rewarded for their hard work and dedication.

With 2019 being such a bad year seasonally for us/our cow herd numbers dropping to an all-time low, we are only able to offer a small number of bulls in this year's bull sale. Moving forward to next year (and subsequent years following), we are excited to be getting 'back on track' with a much larger offering of bulls.

Charolais

Our Charolais draft this year is definitely one of the most consistent that we presented. They are a moderate framed group with plenty of thickness and softness.

We are excited to offer our first sons of HRJ Crowd Favourite; a Canadian sire that we share the semen rights in with Palgrove Pastoral Company. Palgrove Kandoo sons make up the balance of the offering. As an added bonus this year, all bulls are polled.

Simmentals & Sim-Angus

In the Simmental offering this year, we genuinely believe that there is a bull for everyone. These bulls have a tremendous amount of carcass in them and will



do a great job over a variety of cow herds. There are a range of first sons to sell from many homebred sires that we have retained or bulls that have been high sellers through our previous sales. This year's draft represents the highest percentage of homozygous black bulls that we have offered to date.

Angus

This year, we have chosen to include some purebred yearling Angus bulls that are a result of cows purchased for our Sim-Angus program. These young bulls have great weight for age and come from the well-known Premier Angus herd.

Once again, we will have the sale available online through Elite Livestock Auctions for those that cannot make it on sale day. Of course, please feel free to inspect the bulls at any time prior to the sale; we always love to show people through our cattle!

Following the sale, we would love to catch up with those that have a bit of time, so please stick around for some food and refreshments!

Glen and Kim



Elite
CATTLE CO



ON-PROPERTY & ONLINE BULL SALE

12 noon Thursday,
2nd September 2021

'Murwollock'

207 Meandarra-Talwood Rd, Meandarra Qld 4422

Offering
26 BULLS

12 BLACK & RED SIMMENTALS & SIM-ANGUS
4 ANGUS YEARLINGS
10 CHAROLAIS



Russell Jorgensen
0428 880 411



VIDEO FOOTAGE AVAILABLE

www.elitecattleco.com.au

Glen Waldron & Kim Groner

Glen 0438 662 117 Kim 0433 333 805 e. info@elitecattleco.com.au

www.elitecattleco.com.au



Sale Information

INSPECTION

Bulls will be yarded by 10am on sale day for your viewing however, prior inspections of our cattle are welcomed at any time by contacting the vendors or selling agents.

SUPPLEMENTARY INFORMATION

- All bulls will be scanned prior to sale day by David Reid for Eye Muscle Area, Rib & Rump Fat and Marbling (IMF%).
- Bulls will also have undergone and passed a Bull Breeding and Soundness Evaluation (BBSE) adhering to standards of the Australian Veterinary Association by veterinarian Dr. Ced Wise. All bulls have also undergone a morphology assessment by Rocky Repro.
- All bull weights, scan data and scrotal measurements will be provided on sale day. Individual BBSE Certificates are available upon request.

REBATES

- A 4% rebate is offered to outside agents who introduce approved buyers to the selling agent at least 24 hours prior to sale day, and settle within 10 days. The introducing agent must also attend the sale either with their client or on behalf of them.
- A 2% rebate is offered to outside agents who introduce clients 24 hours prior to sale day but do not attend the sale, and settle within 10 days.

BID CARD SYSTEM AND GST

All buyers are required to register before the start of the sale. All bulls sold will be exclusive of GST.

ABSENTEE BIDDING

- Mobile phone service is very good at the sale complex so please contact either the vendors or selling agents if you require someone to bid on your behalf at the sale.

- Elite Livestock Auctions will be operating on sale day as an alternative bidding option for registered users. We recommend registering at least 24 hours prior to the sale. Instructions for registering can be found on page 4 of the catalogue or visit the Elite Livestock Auctions website: www.elitelivestockauctions.com.au

SALE DAY CATERING

Whilst we hope that we will be able to provide you with lunch and refreshments as per previous years, we will be strictly adhering to any COVID-19 restrictions that may be in place at the time of our sale and will keep you updated closer to sale day.

SALE DAY SAFETY

Whilst our focus on selecting for temperament/quiet cattle is paramount, please realise that sale day places unusual stresses on sale bulls, and that they may act out of nature.

If you choose to enter the sale pens, please be mindful of your safety at all times, and realise you are doing so at your own risk. We ask that any persons under the age of 16, or those that have mobility problems, do not enter the pens on sale day.

The owners and representatives of Elite Cattle Co. accept no liability for any accidents that may occur at 'Murwollock' on Sale Day.

DELIVERY/TRANSPORT

We offer free delivery within a 300km radius of Meandarra to your property and to other major centres in QLD and NSW. Please contact us for details as we would like to personally deliver as many bulls as possible. Bulls will be available for collection on sale day. Any bulls awaiting delivery will be held free of charge.

Sale Information

INSURANCE

All bulls are at the buyer's risk from the fall of the hammer, so we strongly recommend insuring all purchases. A GDL representative will be available on sale day to assist with this.

HEALTH

- The Elite Herd is currently a QLD JBAS 7 score. If you are a WA or NT producer, please speak to us prior to the sale in regards to our bulls eligibility to enter your state.
- All bulls have been vaccinated with 7-in-1, Botulism, Vibrio and 3-Day Sickness with boosters due in June of each year. They have also been vaccinated with 3-Germ Blood and tested Negative for Pestivirus.

PARENT VERIFICATION

Please note that not all our sale bulls have been parent verified prior to sale. If you require your bull to be parent verified after purchase, we will organise for immediate testing & cover the costs of all laboratory fees. In the unlikely event that the results do not match with the catalogued pedigree, we will refund the purchase cost of the bull in full. Please note, we take no responsibility for any discrepancies that may arise for incorrect parentage if buyers do not request parental verification testing on the day of the sale/purchase date.

RETAINED SEMEN SHARES

Semen will be collected prior to sale from a select number of bulls with no further call on these bulls, unless a mutual agreement is made between the vendor and the purchaser.

POLL/HORN STATUS AND COAT COLOUR TESTING

All polled cattle are either Homozygous or Heterozygous Polled. The term Homozygous Polled indicates that the animal carries two copies of the polled gene and should only produce polled progeny (even if the cow they are mated to is horned). The

term Heterozygous Polled indicates that the animal only has one copy of the polled gene and can either produce polled or horned progeny (outcome dependant on the genetic makeup of the cow).

All eligible Charolais bulls, and all Simmental and Sim-Angus bulls in this year's sale have been tested by Neogen Australasia for the polled gene.

All Simmental and Sim-Angus bulls have been tested for coat colour with three possible results identified; Homozygous Black, Heterozygous Black or Homozygous Red.

Results of this testing will be made available on the supplementary sheets on sale day. Please note, we take no responsibility for any inaccuracy that may occur with these particular test results.

GUARANTEE

If there is ever a problem with any of our sale cattle, we would appreciate being the first to know!

All of our bulls are fully guaranteed. In the event that a bull is found to be infertile or incapable of natural service, (which has not occurred due to disease or injury), following the fall of the hammer, we will offer a replacement bull or a credit will be given for the following sale, less the salvage value of the animal. This guarantee does not include interest, expenses, costs or damages. Any claims should be made in writing within 6 months, and accompanied by a veterinary certificate.

DISCLAIMER All reasonable care has been taken by the vendor to ensure that the information provided in this catalogue is correct at the time of publication. However, neither the vendor nor the selling agents make any representations for the accuracy, reliability or completeness of any information provided in this catalogue and do not assume any responsibility for the use or interpretation of the information included in this catalogue. You are encouraged to seek independent verification of any information contained in this catalogue before relying on such information.

HOW TO REGISTER with ELITE LIVESTOCK AUCTIONS



Simply go to www.elitelivestockauctions.com.au using your desktop, laptop, iPad, iPhone or android device.



Once an account has been created you are all "Set to Bid"



Click on the "Sign Up" page / link



Each Auction can then be viewed by clicking "Live Auction" logo on the Elite Livestock Auctions website.



Create a bidding profile using the bidder registration page. (You can either register as a livestock agent, company or private buyer)



Once you receive email notification that your account has been created please go to the sale you wish to bid at and click "Request to Bid"



Agree to the Elite Livestock Auctions Terms & Conditions and the Selling Agents Sale Terms & Conditions as printed in the official Sale Catalogue



The sale will then approve your application to bid and on the sale catalogue you will see "✓ Bid Request Approved"



Click "Register"



On Sale day simply login, click "Enter Auction" on the catalogue page and you can start bidding. (There is no need for software download)



You will then be notified by email that an account has been created.



At the completion of the auction, invoicing will be carried out as per your registration details by the Selling Agents.

Having trouble registering and logging in?

1300 259 742



Elite Livestock Auctions ABN 19604 627 607
Level 19, 123 Eagle Street, Brisbane, QLD 4000

P 1300 259 742 F 07 3041 5063
www.elitelivestockauctions.com.au

COLLECT YOUR VALUABLE LIVESTOCK THE CHEAPEST INSURANCE MONEY CAN BUY

Department of Agriculture & Water Resources audited semen and embryo collection centres

Semen Collection Services

Complete embryo transfer services

- Export & Domestic donor centres
- On farm ET Services in Mobile Laboratory- Servicing the areas of Southern QLD, NSW & NE VIC

We regularly IMPORT & EXPORT semen & embryos in partnership with Alta Genetics Canada & Hawkeye Breeders USA

Artificial Insemination programs and advice

- Veterinary Reproduction Medicines
- AI supplies
- Semen
- Technicians

Liquid Nitrogen Sales

YOUR EXPERT PARTNER, WITH EXPERT ADVICE



HOLBROOK
BREEDERS
AUSTRALIA

Reproducing Excellence

Thank you to Five Star Creative Promotions for their video footage of our 2021 sale bulls.

PLEASE SCAN THE QR CODE TO VIEW OUR VIDEO PLAYLIST



FIVE STAR *Creative Promotions*

- ALL FACETS OF DIGITAL LIVESTOCK MARKETING
- STUDSTOCK PROMOTIONAL VIDEOS
- SALE DAY COVERAGE
- FLYER AND LOGO DESIGN
- REAL ESTATE PROMOTIONAL VIDEOS
- SOCIAL MEDIA MANAGEMENT

We wish Elite Cattle Co success with their 2021 Bull Sale

PH MATT 0473 903 088
SHANNON 0427 636 025
EMAIL: FSCREATIVEPROMOTIONS@GMAIL.COM

CHAROLAIS & SIMMENTAL Breedplan & EBVs Explained

Breedplan is the National Beef Cattle tool utilised to rank and provide estimates (Estimated Breeding Values/EBVs) for an animal's genetic merit for particular production traits (ie. fertility, weight, carcass).

EBVs are based on information collated for the animal's individual performance, and also the performance of any known relatives (i.e. sire, dam, siblings etc).

It is important to note that the Australasian Group Breedplan can only be used to compare herds in Australia and New Zealand, and not across any other countries. Breedplan can also not be used to compare cattle of different breeds (i.e. despite being run as one herd, our Charolais and Simmental bulls in this catalogue can NOT be compared, EBV-wise).

It is considered that accuracies of:

- **Less than 50%** are preliminary EBV's and will have been calculated based on very little information
- **50-75%** are EBVs of medium accuracy
- **75-90%** are EBVs of medium-high accuracy
- **90% plus** are EBVs with a high level of accuracy

In this catalogue, you will notice that we have omitted all individual accuracies, as most of the bulls have accuracies of less than 50%.

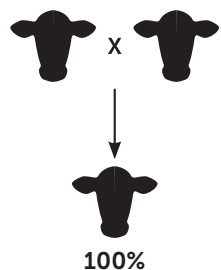
This is primarily due to small group cohorts and therefore we believe that the raw data found on the supplementary sheets on sale day has more relevance to the animals for us in this particular sale year.



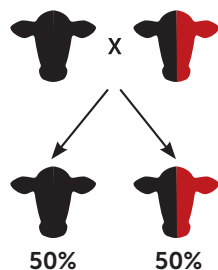
SIMMENTAL Colour Traits

Trying to predict the colour variations can be difficult and confusing. Whilst each individual herd will vary in terms of breed and genetic makeup, we've tried to simplify the **MOST LIKELY** outcomes to give you a guide of what to expect from your Simmental bull.

Homo Black x Homo Black

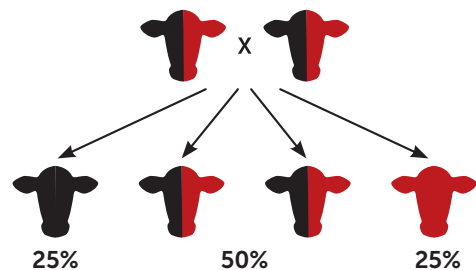


Homo Black x Hetero Black



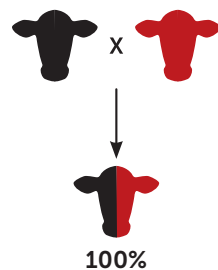
Homozygous Dominant Black - carries two copies of the black coat colour gene.

Hetero Black x Hetero Black

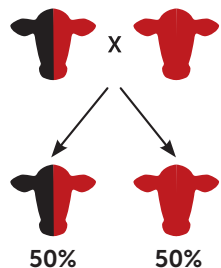


Heterozygous Black - carries one copy of the black coat colour gene and one copy of the red coat colour gene. Black is dominant (so coat colour appears black). Red is recessive.

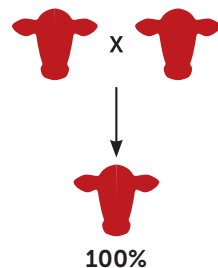
Homo Black x Red



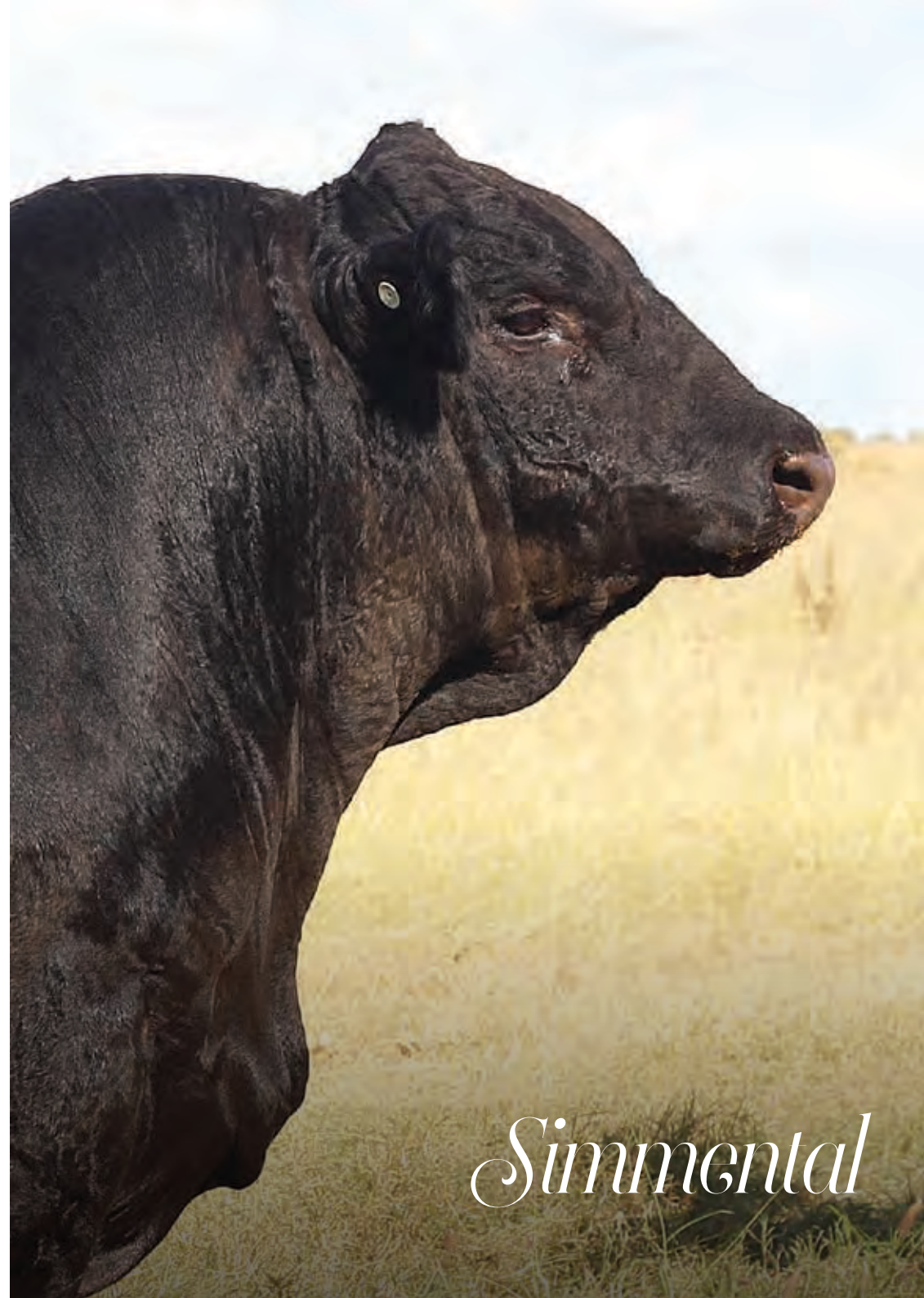
Hetero Black x Red



Red x Red



Red - carries two copies of the red coat colour gene. Even if a red animal comes from two black parents, they do not carry any copies of the black gene.



Simmental

SIMMENTAL/SIM-ANGUS Sire Reference



Double Bar D True Grit
IMCP G181



Elite Mader Money
ECCP M113



Elite Money Maker
ECCP M106



Elite Mega Jackpot
ECCP M121

SIMMENTAL/SIM-ANGUS EBV Comparative Data

	BW	200D	400D	600D	EMA	RIB	RUMP	IMF
1 ECCP P134	0.6	19	37	38	3.7	0.5	-0.2	0.1
2 ECCP Q115	-0.2	23	40	37	3.2	2	1.5	0.1
3 ECCP Q114	0.3	23	37	37	4.2	1.2	0.4	0
4 ECCP Q107	0.5	24	41	43	2.6	1.2	0.6	0
5 ECCP Q117	0.7	25	40	43	3.5	1	0	-0.2
6 ECCP Q110	0.6	22	34	35	4.2	0.7	-0.1	-0.1
7 ECCP Q119	-1.1	15	25	21	1.8	1.8	0.9	0.7
8 ECCP Q123	Herd Bull							
9 ECCP Q128	0.8	19	33	29	3.4	0.6	-0.4	0.4
10 ECCP Q120	0.8	20	36	38	3.7	0.7	0	0
11 ECCP Q108	0.4	22	37	38	3	1.5	1	0.2
12 ECCP Q124	0.8	24	38	43	2.9	1.3	0.8	0.1

SIMMENTAL BREED AVERAGE EBV'S - 2019 BORN CALVES

BW	200D	400D	600D	EMA	RIB	RUMP	IMF
0.7	20	36	45	2.5	0.4	0.2	0.3



1

Elite PLATINUM (PP)(AI)(B)

Ident: ECCP P134 DOB: 07/12/2018 Age: 32 Mths Colour: Black

TNT Tanker U263 (P)(B)

S **DOUBLE BAR D TRUE GRIT** (P)(B)

Wheatland Lady 822U

Wheatland Ultimate Choice (P)(B)

D **ELITE BLACK DIAMOND M123** (Pp)(AI)(B)

2Diamond6 Diamond (P)(AI)

HOMOZYGOUS POLLED, HOMOZYGOUS BLACK

Phenotype Larger framed, long bodied, big footed sire with a beautiful skin type and smooth muscle pattern.

EBVs Top 20% of the breed for EMA.

Added Info Used as one of our main walking sires last year. Semen retained.

Purchaser: \$

2

Elite QUAKER (PP)(ET)(AI)(B)

Ident: ECCP Q115 DOB: 07/09/2019 Age: 23 Mths Colour: Black

RCC/TCF Line Drive M181 (P)

S **SPRINGCREEK LINER 56U**

Nevas L93

LFE The Dark Night 350U

D **LFE BS SHEILA 82A** (P)(B)

LFE BS Sheila 136T (P)(B)

HOMOZYGOUS POLLED, HOMOZYGOUS BLACK

Phenotype Highest growth bull in the sale. A mobile, stretchy, deep bodied sire.

Pedigree Sired by Springcreek Liner 56U, whose genetics are extremely hard to come by in Australia.

Siblings Full sister was the pick heifer last year and is set to be a future donor female.

Purchaser: \$



3 *Elite* **QUARTERBACK** ^{(Pp)(ET)(AI)(B)}

Ident: ECCP Q114 DOB: 06/06/2019 Age: 26 Mths Colour: Black

SVS Captain Morgan 11Z (PP)(B)
S ELITE MONEY MAKER ^{(Pp)(ET)(AI)(B)}
 RF Flirtin For Certin 37U

Wheatland Bull 680S
D ELITE BLACK OPAL L107 ^{(PP)(ET)(AI)(B)}
 Mader Black Opal 1Y (P)(B)

4 *Elite* **QUARTERMASTER** ^{(Pp)(AI)(B)}

Ident: ECCP Q107 DOB: 09/08/2019 Age: 24 Mths Colour: Black

SVS Captain Morgan 11Z (PP)(B)
S ELITE MR. MORGAN ^{(PP)(ET)(AI)(B)}
 RF Certainly Flirtin 202Z (P)(B)

TNT Top Gun R244 (PP)(R)
D TULLATOOLA WENDY L23 ^{(PP)(AI)}
 Tullatoola Wendy E5 (P)(AI)

POLLED, HOMOZYGOUS BLACK

- Phenotype** Long bodied, mobile bull with a beautiful blend of carcass and softness.
- Siblings** Maternal sister was Supreme Champion Exhibit at 2019 Sydney Royal Easter Show. Maternal brother sells as Lot 6.
- EBVs** Top 10% of the breed for EMA.

Purchaser: \$

POLLED, HETEROZYGOUS BLACK

- Phenotype** Moderate framed, structurally correct bull that really packs a punch.
- Pedigree** From our ever-consistent foundation 'Wendy cow line'.
- Siblings** Full brother is one of the pick sale bulls for next year.

Purchaser: \$



5 *Elite* **QUOTABLE** (PP)(B)

Ident: ECCP Q117 DOB: 03/10/2019 Age: 22 Mths Colour: Black

SVS Captain Morgan 11Z (PP)(B)
S ELITE MONEY MAKER (Pp)(ET)(AI)(B)
 RF Flirtin For Certin 37U

FBF1 Combustible (P)(B)
D ELITE WHAMMY N105 (PP)(ET)(AI)(B)
 Jeni Black Whammy 1W (P)(B)

6 *Elite* **QUARTZ** (PP)(AI)(B)

Ident: ECCP Q110 DOB: 15/08/2019 Age: 24 Mths Colour: Black

SpringCreek Lotto 52Y (P)(B)
S ELITE MEGA JACKPOT (PP)(ET)(AI)(B)
 Jeni Black Whammy 1W (P)(B)

Wheatland Bull 680S
D ELITE BLACK OPAL L107 (PP)(ET)(AI)(B)
 Mader Black Opal 1Y (P)(B)

HOMOZYGOUS POLLED, HOMOZYGOUS BLACK

- Phenotype** *Very correct, thick topped, big butted, carcass bull.*
- Pedigree** *We can't seem to go wrong with the Whammy line, his dam is one of our favourites (Whammy N105; Junior Champion Female 2018 Ekka).*
- Added Info** *Junior Champion Bull BEEF 2021.*

Purchaser: \$

HOMOZYGOUS POLLED, HOMOZYGOUS BLACK

- Phenotype** *A bull that really will pack a punch into his progeny; strong topped with great carcass shape and softness.*
- Pedigree** *By the equal top priced sire at our Inaugural Sale, Elite Mega Jackpot.*
- EBVs** *Top 10% in the breed for EMA.*

Purchaser: \$



7

Elite QUANTIFY (PP)(B)

SIM-ANGUS

Ident: ECC2 Q119 DOB: 16/10/2019 Age: 22 Mths Colour: Black

SVS Captain Morgan 11Z (PP)(B)

S ELITE MONEY MAKER (Pp)(ET)(AI)(B)

RF Flirtin For Certin 37U

ACC1 Hustler 2N (P)(B)

D ELITE XSIM HUSTLER G2006Y (P)(ET)(AI)(B)

Coolana X13

HOMOZYGOUS POLLED, HOMOZYGOUS BLACK

Phenotype Attractive, smooth muscled bull with plenty of balance and a beautiful skin and hair type.

EBVs Top 20% of the breed for both birth weight and IMF.

Added Info 75% Simmental, 25% Angus.

Purchaser: \$

8

Elite QUAMBY Q123 (PP)(B) SIM-ANGUS

Ident: ECCD Q123 DOB: 04/12/2019 Age: 20 Mths Colour: Black

Wheatland Bull 680S

S ELITE MADER MONEY (PP)(ET)(AI)(B)

Mader P BlackGold 110S (P)(B)

Carabar Docklands D62

D CARABAR FANCY H84 (P)

Kansas Fancy D207 (P)

HOMOZYGOUS POLLED, HOMOZYGOUS BLACK

Phenotype Long bodied, smooth fronted bull that has thrown a little bit more to the Angus side of his pedigree.

Added Info 50% Simmental, 50% Angus.

Purchaser: \$



9 *Elite* **QANTAS** (PP)(B)

Ident: ECC1 Q128 DOB: 04/12/2019 Age: 20 Mths Colour: Black

LFE The Riddler 323B (P)(B)
S LAVARTA NITRO (P)(AI)(B)
 Lavarta Lavender (P)(B)

Sand Ranch Hand (P)(B)
D TRENTONFARMS STAGE FRIGHT (P)(AI)(B)
 TrentonFarms Chorus Girl (P)(AI)(B)

10 *Elite* **QUOKKA** (PP)(B)

Ident: ECCP Q120 DOB: 25/10/2019 Age: 22 Mths Colour: Black

Wheatland Bull 680S
S ELITE MADER MONEY (PP)(ET)(AI)(B)
 Mader P BlackGold 110S (P)(B)

Wheatland Ultimate Choice (P)(B)
D ELITE BLACK DIAMOND M123 (Pp)(AI)(B)
 2Diamond6 Diamond (P)(AI)

HOMOZYGOUS POLLED, HOMOZYGOUS BLACK

Phenotype Clean fronted, smooth muscled bull with a good skin and hair type.
Added Info Youngest bull in the draft.

Purchaser: \$

HOMOZYGOUS POLLED, HETEROZYGOUS BLACK

Phenotype Well put together bull that has always been a standout for his sire appeal and natural muscle pattern and carcass shape.
Siblings Maternal brother sells as Lot 1.
Added Info If you don't mind 'a bit of bling', make sure you check out this impressive bull!

Purchaser: \$



11

Elite QUENCHER (PP)(AI)(B)

Ident: ECCP Q108 DOB: 09/08/2019 Age: 24 Mths Colour: Red

DCR Mr Moon Shine X102 (PP)

S TNT 90 PROOF Z401 (PP)(R)

TNT Miss S17

TNT Bootlegger Z268 (PP)(R)

D ELITE WENDY M125 (Pp)(ET)(AI)(R)

Tullatoola Wendy E5 (P)(AI)

HOMOZYGOUS POLLED, HOMOZYGOUS RED

Phenotype Long bodied, clean sheathed bull with plenty of carcass.

Added Info Heifer's first calf.

Purchaser:

\$

12

Elite QUEST (PP)(AI)

Ident: ECCP Q124 DOB: 17/11/2019 Age: 21 Mths Colour: Light Red

SVS Captain Morgan 11Z (PP)(B)

S ELITE MR. MORGAN (PP)(ET)(AI)(B)

RF Certainly Flirtin 202Z (P)(B)

Woonallee Kawasaki (PP)(ET)(AI)

D ELITE WENDY N120 (P)(ET)(R)

Tullatoola Wendy E5 (P)(AI)

HOMOZYGOUS POLLED, HOMOZYGOUS RED

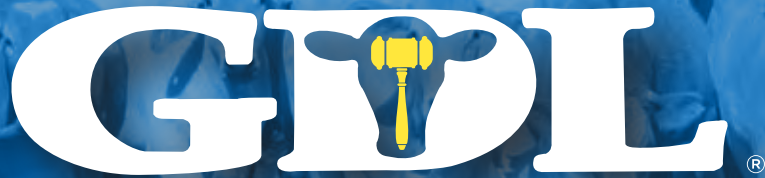
Phenotype Moderate framed, structurally correct, deep sided bull with impressive carcass shape.

Pedigree Outcross pedigree for most traditional breeders.

Added Info Has always been a favourite; it's hard to pick out a flaw in this one!

Purchaser:

\$



A NUTRIEN AG SOLUTIONS PARTNER

Big Enough To Count, Small Enough To Care

- 21 Branches
- Auctions & Private Sales • Feedlot Services
- Rural & Residential Property Sales

Our Stud Stock Team

Harvey Weyman-Jones	0414 941 788	Georgie Connor	0428 347 550
Mark Duthie	0448 016 950	Josh Heck	0409 732 676
Peter Brazier	0407 525 983	Tony Dwyer	0427 589 437



www.facebook.com/GDL1997



gdlrural.com.au



Angus

ANGUS BREED AVERAGE EBV'S - 2020 BORN CALVES

CED	DTRS	GL	BW	200	400	600	MCWT	MILK	DTC	SS	DOC	
+1.9	+2.6	-4.5	+4.2	+48	+87	+114	+98	+17	-4.6	+2.0	+6	
CW	EMA	RIB	RUMP	RBY	IMF	NFI-F	FOOT	CLAW	BREED	DOM.	GRAIN	GRASS
+65	+6.0	-0.1	-0.4	+0.5	+2.0	+0.17	+0.98	+0.85	+118	+110	+124	+114



13

Premier REGULATOR^{R32}

Ident: ASH R32 DOB: 11/07/2020 Age: 13 Mths AMFU, CAFU, DDFU, NHFU

WMR Timeless 458 (USA 16226527)
S GDAR REGULATOR 364 (USA 17526276)
 GDAR BlackCap Lady 071 (USA 16641029)
 The Grange Wheel Wright D6 (EFTD6)
D KANSAS TARIKU G299 (NKLG299)
 Kansas Tariku V94 (NKLV94)

CED	+2.2 57%	CW	+61 64%
DTRS	+7.4 48%	EMA	+3.4 62%
GL	-4.1 67%	RIB	+1.9 65%
BW	+4.5 74%	RUMP	+2.9 62%
200	+50 68%	RBV	-0.5 62%
400	+90 68%	IMF	+2.5 62%
600	+115 68%	NFI-F	+0.00 51%
MCWT	+88 66%	FOOT	-
MILK	+19 62%	CLAW	-
DTC	-6.0 39%	BREED	\$132
SS	+1.6 66%	DOM.	\$119
DOC	-	GRAIN	\$140
		GRASS	\$127

Phenotype Very deep sided and balanced bull with a good blend of carcase and softness and good sire's head.

Pedigree His dam sold at the Premier Angus Dispersal Sale for \$17,000 at 10 yrs of age.

EBVs Top 5% for both rib and rump fat and a good overall blend of figures.

Added Info Actual birth weight - 38kg

Purchaser: \$

14

Premier TOTAL FOCUS^{R73}

Ident: ASH R73 DOB: 17/07/2020 Age: 13 Mths AMFU, CAFU, DDFU, NHFU

Cudlobe Total Focus 6A (CAN1734387)
S PEAKES BOWEN TOTAL FOCUS
M7 M794 (EVTM794)
 Peakes Annie H692 (EVTH692)
 Merchiston Vision 564 (NZE14738005564)
D PREMIER JESTRESS H66 (ASHH66)
 Vermont Jestress D901 (CCVD901)

CED	-2.9 52%	CW	+66 55%
DTRS	-2.3 42%	EMA	+5.1 53%
GL	-6.5 62%	RIB	-0.4 57%
BW	+5.8 72%	RUMP	-1.9 55%
200	+53 63%	RBV	+1.0 54%
400	+91 62%	IMF	+1.4 53%
600	+119 63%	NFI-F	-0.44 42%
MCWT	+110 58%	FOOT	-
MILK	+17 51%	CLAW	-
DTC	-3.7 33%	BREED	\$104
SS	+1.7 56%	DOM.	\$103
DOC	-	GRAIN	\$106
		GRASS	\$104

Phenotype Similar bull to lot 13; a moderate thick package with a good depth of flank.

Pedigree His dam sold at the Premier Angus dispersal for \$28,000.

Added Info Actual birth weight - 42kg.

Purchaser: \$



15 Premier IDENTITY R34

Ident: ASH R34 DOB: 11/07/2020 Age: 13 Mths AMFU, CAFU, DDFU, NHFU

- Sitz Upward 307R (USA14963730)
- S **KOUPALS B&B IDENTITY** (USA16710463)
- B&B Erica 605 (USA15462235)
- The Grange Wheel Wright D6 (EFTD6)
- D **KANSAS TARIKU G299** (NKLG299)
- Kansas Tariku V94 (NKLV94)

CED	-1.7 58%	CW	+68 64%
DTRS	+1.9 50%	EMA	+4.8 62%
GL	-4.2 66%	RIB	+0.1 65%
BW	+4.7 73%	RUMP	+0.8 63%
200	+50 67%	RBV	+0.5 63%
400	+93 67%	IMF	+2.0 62%
600	+118 68%	NFI-F	-0.04 53%
MCWT	+88 66%	FOOT	-
MILK	+23 63%	CLAW	-
DTC	-5.0 42%	BREED	\$123
SS	+2.0 65%	DOM.	\$115
DOC	-	GRAIN	\$128
		GRASS	\$120

Phenotype Stylish, long bodied bull with a beautiful front end. Will mature into an impressive 2 year old.

Siblings Maternal brother to lot 13.

EBVs Top 4% in the breed for milk.

Added Info Actual birth weight - 38.5kg

Purchaser: \$

16 Premier UPWARD R145

Ident: ASH R145 DOB: 08/08/2020 Age: 12 Mths AMFU, CAFU, DDFU, NHFU

- Connealy Onward (USA14216491)
- S **SITZ UPWARD 307R** (USA14963730)
- Sitz Henrietta Pride 81M (USA14087650)
- Booroomooka Warwick W245 (NGMW245)
- D **KENNY'S CREEK E6** (NDIE6)
- Kenny's Creek W110 (NDIW110)

CED	-7.5 62%	CW	+66 62%
DTRS	-0.8 57%	EMA	+6.1 65%
GL	-2.8 66%	RIB	-0.6 63%
BW	+6.2 74%	RUMP	-1.5 63%
200	+52 66%	RBV	+1.5 62%
400	+90 66%	IMF	+0.8 57%
600	+114 66%	NFI-F	-0.31 -
MCWT	+104 65%	FOOT	-
MILK	+18 63%	CLAW	-
DTC	-3.2 51%	BREED	\$93
SS	+1.3 63%	DOM.	\$98
DOC	- -64%	GRAIN	\$87
		GRASS	\$96

Phenotype A later maturing bull with plenty of length and growth for age.

Added Info Actual birth weight - 46kg.

Purchaser: \$



2020 Bull Sale

**KEN MILLS
MACHINERY**



T 07 4164 9288
M 0447 447 874
F 07 4162 4980

Cnr Bunya Highway & Stehbens St, Kingaroy Qld 4610
www.kenmillsmachinery.com.au email: david.evans@kenmills.com.au



For all your farm tractor needs contact Ken Mills Machinery



**Select from Kubota and Mahindra
Two and four wheel drive options.**



Charolais

CHAROLAIS Sire Reference



Palgrove Kandoo

PK K981E



HRJ Crowd Favourite

PK K981E

CHAROLAIS Mid-Parent EBVs

		BW	200D	400D	600D	EMA	RIB	RUMP	IMF
17	EL1 Q5E	1.5	13	22	32	1.9	0.6	0.7	0.2
18	EL1 Q112E	1	19	35	55	1.3	0.7	0.5	0.1
19	EL1 Q9E	0.1	16	30	39	1.5	0.8	0.7	0.3
20	EL1 Q23E	0.2	13	23	29	2	0.9	1.3	0.4
21	EL1 Q8E	1.4	19	37	50	1.3	0.8	0.6	0.2
22	EL1 Q21E	2	15	26	39	2	0	-0.2	0.1
23	EL1 Q11E	0.6	21	42	55	1.5	1.8	2.1	0.3
24	EL1 Q13E	1.9	14	26	38	1.9	0	0	0.3
25	EL1 Q15E	1	18	35	48	1.5	0.6	0.6	0.2
26	EL1 Q14E	0.8	13	26	35	2	0.7	1.1	0

CHAROLAIS BREED AVERAGE EBV'S - 2019 BORN CALVES

BW	200D	400D	600D	EMA	RIB	RUMP	IMF
0.2	12	24	32	1.6	0.4	0.5	0.2



PLEASE SCAN THE QR CODE
TO VIEW OUR VIDEO PLAYLIST



17

Elite QUICK CASH (P)

Ident: EL1 Q5E DOB: 02/10/2019 Age: 23 Mths Colour: White

Silverstream Evolution E168 (P)

S PALGROVE KANDOO K981E (AI)(P)

Palgrove Nanette 109 (AI)(P)

Platinum Wind-Fall W75E (ET)(P)

D KINDARA PW ESTELLA 23 (AI)(P)(R/F)

Kindara PA Estella 13 (ET)(R/F)

Phenotype Long bodied, smooth made bull with plenty of softness and ideal carcass quality.

Pedigree Natural calf from one of our favourite donor females.

Added Info Lead-off Kandoo son.

Purchaser: \$

18

Elite QUEENSLANDER (AI)(P)(R/F)

Ident: EL1 Q12E DOB: 10/10/2019 Age: 22 Mths Colour: Red

Sparrows Kingston 139Y (P)

S HRJ CROWD FAVOURITE 515C (P)

HRJ Miss Paris 7S (P)

Palgrove Avenger (R/F)

D KINDARA AV ESTELLA 15 (AI)(ET)(R/F)

Kindara Estella 2 (AI)

Phenotype Standout sire prospect due to his combination of mobility, carcass, strong bone and outcross pedigree.

Pedigree First HRJ Crowd Favourite son to sell at Elite and his dam is one most consistent producers.

Mid-Parent EBVs Top 5% for 600D weight, top 10% for 200 and 400D weight.

Purchaser: \$



19

Elite QUICKDRAW (AI)(P)

Ident: EL1 Q9E DOB: 07/10/2019 Age: 22 Mths Colour: White

Sparrows Kingston 139Y (P)

S HRJ CROWD FAVOURITE 515C (P)

HRJ Miss Paris 7S (P)

Ayr Inca's Sunset

D MOONGOOL AFFIX 4 (R/F)

Mixhill Yin Affix (AI)(R/F)

Phenotype Moderate framed, thick-made, balanced bull with plenty of eye appeal.
Pedigree His dam is the maternal sister to the highly decorated Moongool Derringer.

Purchaser: \$

20

Elite QUALIFIER (P)

Ident: EL1 Q23E DOB: 26/12/2019 Age: 20 Mths Colour: White

Silverstream Evolution E168 (P)

S PALGROVE KANDOO K981E (AI)(P)

Palgrove Nanette 109 (AI)(P)

LT Bluegrass 4017P (P)

D KINDARA BG ESTELLA 29 (AI)(P)(R/F)

Kindara AV Estella 15 (AI)(ET)(R/F)

Phenotype A young athletic, long bodied bull with an impressive width of hip-pin and depth of hindquarter.

Siblings Maternal brother was a high seller in our Inaugural Sale.

Added Info Small scurs have been removed.

Purchaser: \$



21

Elite QUAIT (AI)(P)

Ident: EL1 Q8E DOB: 05/10/2019 Age: 22 Mths Colour: White

Sparrows Kingston 139Y (P)

S HRJ CROWD FAVOURITE 515C (P)

HRJ Miss Paris 7S (P)

Palgrove Admiral (P)(R/F)

D KINDARA PA TINSEL 8 (P/S)(R/F)

Kindara UV Tinsel (R/F)

Phenotype

One of the highest growth bulls in the Charolais offering that carries good bone and a strong polled head.

Siblings

Maternal brother is a stud sire for Gottadowell Charolais in South Australia.

Mid-Parent EBVs Top 10% for 200, 400 and 600D weights.

Purchaser:

\$

22

Elite QUINTON (P)

Ident: EL1 Q21E DOB: 08/12/2019 Age: 20 Mths Colour: White

Silverstream Evolution E168 (P)

S PALGROVE KANDOO K981E (AI)(P)

Palgrove Nanette 109 (AI)(P)

4 Ways Hallmark (P/S)

D ELITE DORIS L12 (H)

Gobongo Doris F293E (D)

Phenotype

Upstanding young sire with added length of body and looseness of hide. A bull you haven't seen the best of yet.

Pedigree

Another bull very typical of the Kandoo progeny.

Purchaser:

\$



23

Elite **QUICKEZE** (AI)(P)

Ident: EL1 Q11E DOB: 08/10/2019 Age: 22 Mths Colour: White

Sparrows Kingston 139Y (P)

S **HRJ CROWD FAVOURITE 515C** (P)

HRJ Miss Paris 7S (P)

Harvie Redemption 36P (P)(R/F)

D **MONUMENT VALLEY H24E** (AI)(ET)(P)(R/F)

Gobongo Rebbly W100E (D)

Phenotype

Strong topped, soft sire with adequate bone and a good set of testicles.

Pedigree

His dam is our top shelf donor female and produced the two top-selling Charolais bulls in last year's sale.

Mid-Parent EBVs Top 5% for all growth traits and top 10% for rib and rump fat.

Purchaser:

\$

24

Elite **QUICK FIX** (P)

Ident: EL1 Q13E DOB: 15/11/2019 Age: 21 Mths Colour: White

Silverstream Evolution E168 (P)

S **PALGROVE KANDOO K981E** (AI)(P)

Palgrove Nanette 109 (AI)(P)

Elite Hotshot (R/F)

D **ELITE X-CITE M48** (H)

Kindara PA X-Site 6 (R/F)

Phenotype

Very similar bull to the previous lot with a touch more carcass shape. A balanced individual with a clean underline.

Pedigree

One of the last Kandoo bull to be sold at Elite as the consistently producing sire now resides at Chenu Charolais in Victoria.

Purchaser:

\$



25

Elite QUICKSILVER (AI)(P)

Ident: EL1 Q15E DOB: 15/11/2019 Age: 21 Mths Colour: White

Sparrows Kingston 139Y (P)

S HRJ CROWD FAVOURITE 515C (P)

HRJ Miss Paris 7S (P)

4 Ways Hallmark (P/S)

D ELITE ESTELLA L6 (P)

Kindara PW Estella 23 (AI)(P)(R/F)

Phenotype Eye-appealing, moderate framed bull with all the thickness and softness you could want.

Pedigree Dam was Junior Champion Female at Ekka .

Purchaser: \$

26

Elite QUANTUM (P)(R/F)

Ident: EL1 Q14E DOB: 15/11/2019 Age: 21 Mths Colour: Red

Silverstream Evolution E168 (P)

S PALGROVE KANDOO K981E (AI)(P)

Palgrove Nanette 109 (AI)(P)

Paringa Western Spur D196 (AI)(ET)(P)

D ELITE PEACH M33 (AI)(P)(R/F)

Elite Peach K5 (R/F)

Phenotype Deep sided, soft made bull with a well laid-in shoulder.

Pedigree His dam is a maternal sister to Elite Netflix, a high seller at our Inaugural Sale selling to Riverglen Charolais.

Purchaser: \$



FOR ALL YOUR **CATTLE & GRAIN**
TRANSPORT NEEDS

RAMBO
0429 692 150



Locals Supporting Locals

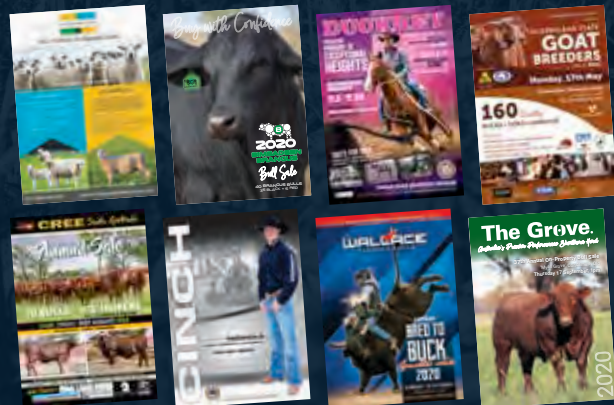
Congratulations Glen and Kim on this year's 'Elite lineup'

Elite Sale Summary

CATTLE CO	Sold	Top	Gross	Average
Simmental/ Sim-Angus				
Angus				
Charolais				
Total				

CATTLELOGUE *Queen*

STAND OUT *from the crowd*



- CATTLE
- HORSES
- SHEEP
- GOATS



Customized
SALE CATALOGUE DESIGN

Advertisements
Promotional Material • Publications
Sale, Trade Show,
Homestead & Property Signage

www.cattleloguequeen.com.au



◀ Elite Black Wendy Q109



◀ Elite Sheila Q130
Full sister of Lot 2

SHOW FEMALES 2021

LIVESTOCK AUCTION

Terms & Conditions of Sale

CHAPTER ONE - PRELIMINARY

- A vendor is bound by these terms and conditions by offering livestock for sale by auction.
 - An agent (which includes an auctioneer) is bound by these terms and conditions by conducting an auction sale.
 - A buyer is bound by these terms and conditions by bidding at auction.
 - Competition and Consumer Act (Cth) 2010**

It is unlawful for parties that are, or otherwise would be, in competition with each other to make, or give effect to, a contract, arrangement or understanding that contains a provision relating to:

 - price-fixing; or
 - restricting outputs in the production and supply chain; or
 - allocating customers, suppliers or territories; or
 - bid-rigging; or
 - collusive bidding.

Large fines and other sanctions may be imposed for unlawful conduct.
- In these terms the expression auctioneer, agent, buyer and vendor respectively includes the servants, contractors and agents of each of them. The auctioneer, agent, buyer and vendor shall be wholly responsible for the acts and omissions of their respective servants, contractors and agents. The term "auctioneer" includes, so far as the law and context permits, the vendor's agent.
 - When used in these terms the expressions "companion animals" means all animals originating from the same property on a particular day. Where lots are split and sent to multiple establishments, then all of these animals shall be regarded as companions.
- The following applies in interpreting these terms and conditions:
 - The following words have the following meanings:

Fees means all levies, charges, fees, costs and other expenses incurred or relating to these terms and conditions and the sale and purchase of livestock including, without limitation, transaction levies, yard and weigh dues, cartage, advertising and rebates, and whether paid for, or incurred, by the agent;

Livestock means animals auctioned pursuant to these terms and conditions; and

Price means the amount at which the lot has been sold to the buyer referred to in clause 7 of these terms and conditions

 - plus any Fees and other expenses incurred in relation to the purchase of livestock that are payable by the buyer; and
 - plus any GST added in accordance with clause 12.
 - These terms and conditions are subject to legislation or regulation in the State in which the auction is conducted and in the event of any conflict then the legislation or regulation will prevail. The provisions of these terms and conditions are in addition to, and do not derogate from, the duties and rights of vendors, agents and buyers set out in legislation and regulation in the State in which the auction is conducted.

CHAPTER TWO - STANDARD TERMS OF SALE

- Subject to any reserve price, and to the right, prior to the fall of the hammer, of the vendor to withdraw any lot without declaring the reserve, the highest bidder shall be the buyer.
- The auctioneer has the right to bid on behalf of the vendor provided that right is notified prior to the commencement of the sale and is subject to State law.
- A bid cannot be made or accepted after the fall of the hammer unless, in accordance with clause 8, the auctioneer decides to put the lot up again.
- Prior to the fall of the hammer the auctioneer shall announce the last bid and receive any further bids. The last price called by the auctioneer at the fall of the hammer shall be the amount at which the lot has been sold.
- In the event of a disputed bid, the auctioneer is the sole arbitrator of the successful bidder or the auctioneer may decide to put the lot up again. The auctioneer's decision is final.
- The auctioneer may refuse to accept any bid which, in the auctioneer's opinion, is not in the best interest of the vendor and need not give reasons for doing so.
- A bidder shall be deemed to be a principal unless, prior to bidding, the bidder has given to the auctioneer a copy of written authority to bid for or on behalf of another person.
- The successful bidder at a livestock auction sale must give to the auctioneer at the fall of the hammer:
 - the purchaser's name; or
 - the bid card number which identifies the purchaser; or
 - the name of the person on whose behalf the successful bid was made; and
 - the Property Identification Code (known as the "PIC") of destination.
- The auction shall be conducted on the basis that the bid price shall be exclusive of Goods and Services Tax (GST). GST shall be added after the fall of the hammer for those sales subject to GST.
- The vendor warrants;
 - That the vendor has (or will have) the right to sell the livestock at the time of delivery; and
 - That the purchaser will obtain title on completion of the purchaser's obligations under this contract including payment.
- If a buyer does not comply with any of these terms and conditions, which includes the requirements of State law, any livestock knocked down to that buyer may be re-sold by public auction or private contract in whatever lots and manner the auctioneer decides. The re-sale may be with or without notice and shall be at the buyer's risk. The buyer is responsible for all loss and expense arising out of a re-sale and is not entitled to any resulting profit.
- The buyer of livestock must pay the agent the full amount of the purchase price in immediate funds on receipt of a tax invoice. Payment is required prior to delivery unless some other time for payment is specified in an agreement between the buyer and the auctioneer that was made before the fall of the hammer. If, before delivery, payment has not been made then clauses 20 to 23 apply.
- No person may bid unless, prior to the commencement of the sale, that person has made arrangements satisfactory to the auctioneer for payment for livestock purchased. If bids in breach of this condition are inadvertently accepted, delivery shall not be given until the purchase money is paid and any law, rule or practice to the contrary is accordingly negated as far as possible.
 - Cattle sold on a liveweight basis that are weighed pre-sale are at the risk and expense of the buyer upon the fall of the hammer.
 - Cattle sold on a liveweight basis that are weighed post-sale are at the risk and expense of the buyer immediately after weighing.
 - All livestock other than cattle sold on a liveweight basis are at the risk and expense of the buyer upon the fall of the hammer.
- Subject to this clause the sale is complete on the fall of the hammer.
 - The time for rejection is the time commencing at the fall of the hammer and ending at the first of:
 - delivery is taken by a representative of the buyer;
 - departure of the animal from the purchaser's delivery pen; or
 - one hour after the last animal is:
 - in the case of pre-sale weighing, sold; or
 - in the case of post-sale weighing, weighed.
 - During the time for rejection the buyer may reject any animal which is lame, blind or diseased where that condition existed prior to the fall of the hammer but could not be reasonably observed when the animal was in the selling pen.
 - If the purchaser rejects an animal during the time for rejection then the sale of that animal is cancelled and the animal is returned to the vendor or sold on such terms as any buyer and the agent may agree, after the agent has disclosed the reason for rejection to that buyer.

- This subclause applies only to cattle which are sold in Queensland at auction for slaughter. The agent has responsibility for the prevention of loss or escape (but not death, sickness or injury) of those cattle from the time of the fall of the hammer, for delivery to and from the scales, to the buyer's delivery pen and onto the buyer's nominated transport. This responsibility ends at the earlier of those cattle boarding the buyer's nominated transport or sunset on the day after the sale. This subclause does not apply if the agent makes an announcement to that effect prior to sale.
- Subject to the right of rejection in Clause 18, all conditions and warranties expressed or implied by law are hereby excluded from the sale to the extent that the law allows. All lots are open for inspection prior to the commencement of the sale and are sold with all faults, if any. No compensation shall be given for any faults, imperfections, errors of description, number in or of any lots sold or otherwise.
 - Any claim or objection arising out of an error or misdescription in the provision of relevant information in terms of legislation or regulation concerning the National Livestock Identification Scheme (NLIS) must be made by 5:00pm on the seventh day after the fall of the hammer. No objection, requisition or claim against the vendor or agent in respect of such error or misdescription can be made after that time.
 - Any statements made by the vendor or the auctioneer whether in writing or orally to the effect that any female has been pregnancy tested or scanned positive shall mean and require only that a certificate in writing shall be supplied to the buyer signed by a qualified veterinary surgeon or certified scanner certifying that the said female has been tested or scanned on the date specified in the certificate and that in the opinion of the surgeon or scanner was pregnant on that date.
 - For slaughter cattle, the agent undertakes to make every reasonable effort to ensure that any NLIS cattle device number is transferred from the saleyard PIC to the purchaser's PIC on the NLIS database no later than midnight on the day of the sale.
 - For other slaughter livestock the agent undertakes to make every reasonable effort to ensure that the NLIS information is transferred from the saleyard PIC to the purchaser's PIC on the NLIS database no later than midnight on the day of the sale.
 - Where livestock have a food safety or market eligibility status derived from the National Vendor Declaration (NVD) and/or the NLIS/ERP database, the agent will inform the buyers by presale catalogue and/or announce the status prior to the offering of those lots.
- If delivery is made to, or possession obtained by, the buyer or its representative before full payment of the Price, then until full payment is received, the buyer:
 - does not acquire title to the livestock;
 - holds the livestock as bailee only for the vendor;
 - must act in a fiduciary capacity in its relationship with the vendor;
 - must store the stock separately or so that they are readily distinguishable from other livestock owned by the buyer;
 - is responsible for the safety and well being of the livestock;
 - may make a bona fide sale for market value of any or all of the livestock. As between the buyer and the subsequent buyer, the sale shall be made by the buyer in its own name and not as agent for the vendor, however as between the vendor and buyer, the sale shall be made as bailee and agent for the vendor; and
 - must keep and account for the proceeds of any subsequent sale separately from its other money and hold those proceeds, together with the benefits of any rights against subsequent buyers, on trust for the vendor.
- The purchaser agrees that:
 - Clause 20 creates a registrable security interest under the Personal Property Securities Act (Cth) 2009 (PPSA);
 - The Purchaser acknowledges the rights of the Seller (and/or the Agent if Clause 25 applies) to register a financing statement under the PPSA with respect to the security interest created by this clause;
 - The Livestock are collateral for the purposes of the PPSA;
 - to the extent permitted, the Purchaser waives any right the Purchaser has under the PPSA to receive notices; and
 - the date upon which the security interest created by this clause comes into force is the first date on which livestock are delivered pursuant to this contract
- The buyer may not make any claim against the vendor for actions by the vendor or its agent under clauses 20 or 21 and indemnifies the vendor and its agent against any loss, damage, costs, expenses, penalties, fines or claims suffered by the vendor, the agent or any person or entity arising from the vendor exercising its rights under clauses 20 or 21.
- Clause 23 applies whenever the agent pays the vendor before being paid by the buyer, which the agent is not bound to do. The agent is then the del credere agent of the vendor at law.
- The vendor hereby gives notice to the buyer of the assignments referred to in clause 23.3.
- When this clause applies, in addition to any rights of the agent that arise by operation of the law, the parties agree that, subject to clause 23.5 the agent is subrogated to all rights of the vendor under these terms and conditions against the buyer.
- The vendor acknowledges that the agent may take enforcement, repossession or other action to recover any livestock for which the buyer has not paid in full, or the Price of such livestock, owing by the buyer under these terms and conditions:
 - when this clause does not apply, as agent of the vendor (including by reselling the livestock); and
 - when this clause applies, on the agent's own behalf exercising the rights of the vendor by subrogation or assignment under these terms and conditions (whether in the vendor's name or not) and, where title to the livestock has not passed to the agent, by selling the livestock as agent of the vendor without the agent having to account to the vendor for the proceeds of sale.
- The agent may at any time, assign, transfer, securitise or otherwise dispose of all or any of its rights under these terms and conditions and any debts created pursuant to it (including, without limitation, the rights assigned to it under clause 23.3).
- The vendor hereby irrevocably appoints the agent as the vendor's attorney to:
 - do at any time and in any manner as the agent thinks fit all acts necessary or desirable to perfect or improve the rights and interests afforded, or intended to be afforded, to the agent under these terms and conditions; and
 - appoint one or more sub-attorneys to do anything that the agent may do as the vendor's attorney.
- These terms and conditions do not render the agent liable to the buyer as vendor nor entitle the buyer to set off against the agent any right the buyer may have against the vendor or otherwise.
- The buyer acknowledges that the provisions of this clause 23 are intended solely for the benefit of the agent (and its assigns) and the vendor. The liabilities and obligations of the buyer will not be in any way affected:
 - by this clause 23, other than as it expressly provides; or
 - by the failure of the agent or the vendor or either of them to comply with the terms of this clause 23.
- The buyer must pay all amounts payable to the vendor or the agent under these terms and conditions without any deduction, withholding, set off or counterclaim whatsoever, whether the benefit of a deduction, withholding, set off or counterclaim is alleged to exist in favour of the buyer as against the vendor or the agent in any capacity whatsoever or any other person including any assignor of the vendor's or the buyer's interests under these terms and conditions.
- The agent agrees that he is liable to pay to the vendor the Price, less such commission as is agreed between the vendor and the agent, and in the absence of any agreement such amount as is reasonable, and less the Fees that are payable by the vendor that were incurred by the agent on behalf of the vendor in relation to the sale of the livestock.
 - In the event that the buyer pays the Price or part of it direct to the vendor then the agent has no liability to the vendor for the amount of such payment. Further, if the agent pays the vendor any amount which the buyer also pays direct to the vendor in respect of the same livestock, then the vendor must repay the agent that amount and the agent may debit that amount to an account held in the name of the vendor by the agent.
 - Regardless of whether or not a sale has occurred the agent may, but is not under obligation so to do, instead of deducting payments owed to it by the vendor, debit the amount of the commission and fees to an account held in the name of the vendor by the agent.
- The auctioneer has been retained by the vendor as auctioneer for the purpose of selling the livestock comprised in the lots. The terms of engagement between the auctioneer and the vendor do not extend to the provision of advice by the auctioneer to the vendor in relation to the safety or otherwise of the sale ring, the saleyards and the surrounding environments.
 - The vendor, the agent and the buyer agree to comply with their several duties under the Australian Animal Welfare Standards and Guidelines for the Land Transport of Livestock and further to consign, manage, receive, transport and handle livestock in accordance with any other or additional requirements of animal welfare legislation specific to the jurisdiction in which livestock are consigned, managed, received, transported and handled in the course of the auction process.

CHAPTER THREE - VENDOR WARRANTY FOR CORRECT PRESENTATION AND DECLARATION

26. This chapter applies only in the case of livestock and their companion animals sold at auction for slaughter when the buyer is the slaughterer and the livestock are transported direct from the sale yard to the meatworks at which they are slaughtered. This chapter does not apply if the buyer is a trader who subsequently resells the livestock to a slaughterer. A slaughterer is any person who pays the AMPC Processor levy.
27. The warranty of a vendor is that livestock and their companion animals offered for sale at auction:
- pass government and other regulatory authority requirements and inspections at the time of slaughter;
 - are of merchantable quality;
 - carry an NLS device in accordance with State law;
 - in the case where a representation has been made in the pre-sale catalogue that the livestock have particular characteristics or are fit for a particular purpose or market, and such representations are based on information in any document, the livestock will have those characteristics or will be fit for the particular purpose or market; and
 - all information in any document provided by the vendor is true, complete and correct in all material respects.
28. In the event of a breach by the vendor of the vendor's warranty and provided such breach is notified by the buyer to the agent by 5:00pm on the 7th day after the fall of the hammer then the buyer is not liable to pay the portion of the Price of such of the vendor's livestock to which the breach applies.
29. However if the breach by the vendor is such that the livestock are not rejected outright but are instead downgraded then the buyer will pay the value of the livestock at their next highest and best use.
30. In the case of a breach by the vendor of the vendor's warranty then the vendor will also be liable to the buyer for any further losses which the buyer might establish but the buyer will take all reasonable steps in co-operation with the agent and vendor to mitigate both the effect of the breach and the amount of any loss.
31. Where a sentinel animal of a lot tests positive for chemical residue, or foreign material contamination and provided such test is certified and notified as required by these vendor warranty terms, then:
- the buyer will be entitled to delay payment for the price of all livestock in that lot only; or
 - the vendor has the option, at the vendor's cost, of collecting the companion animals, if allowed by law; or of having the livestock slaughtered in which event the risk of further condemnations will be that of the vendor. Where product integrity is potentially jeopardised, the Processor has the right to refuse slaughter and send the livestock back to the consigning property at the vendor's cost.
32. The auctioneer is liable to the buyer in respect of any breach of the vendor's warranty arising out of:
- any error, by the auctioneer, of transcription of information from the NVD completed by the vendor to the pre-sale catalogue or the buyers post-sale summary;
 - any failure by the auctioneer to notify the buyer, prior to bidding, of any breach by the vendor of the warranty of the vendor if the buyer establishes that the agent knew of such breach prior to the sale; and
 - any failure by the auctioneer to announce prior to bidding, or disclose in the pre-sale catalogue, that the vendor has failed to provide a NVD that is complete in all material aspects.

CHAPTER FOUR - OWNERS RISK FOR CONDITION OF CATTLE

33. This chapter applies only in the case of cattle and their companion animals sold at auction for slaughter when the buyer is the slaughterer and the cattle are transported direct from the sale yard to the meatworks at which they are slaughtered. This chapter does not apply if the buyer is a trader who subsequently resells cattle to a slaughterer. A slaughterer is any person who pays the AMPC Processor levy.
34. Owners risk reflects the producer's responsibility to provide slaughter cattle for sale that are fit for human consumption. Cattle are fit for human consumption if they are not condemned as unfit by government. Owners risk applies if the condemnation is due to a condition in the animal which the buyer establishes, by the relevant government certificate, existed prior to the fall of the hammer.
35. A buyer with the benefit of owners risk protection is not liable to pay the Price of that animal to the vendor. The buyer remains nevertheless liable for all costs incurred after the fall of the hammer in transport, slaughter, testing and disposal of the animal.
36. Owners risk protection is available to the buyer of cattle to which this chapter applies if all of the following are satisfied:
- a certificate is issued by government which states the relevant NLS RFID tag number and PIC, the date of the certificate, the reason for condemnation and that the reason for condemnation existed prior to the fall of the hammer;
 - the certificate is received by the selling agent either in its original form or by fax or electronic communication in the form of data, text or imaging by 5:00pm on the 7th day after the fall of the hammer; and
 - if the condemnation is due to chemical residue the certificate follows testing in a government approved laboratory which establishes maximum residue limits in excess of the Australian limit.
37. Owners risk does not apply, and the buyer must pay for the cattle, if the reason for condemnation is any of bruising, fever, partial condemnation or emaciation.

CHAPTER FIVE - NOTICES REQUIRED BY LEGISLATION

NSW Property, Stock and Business Agents Act 2002 Warnings

Penalties for collusive practices. It is an offence against the Property, Stock and Business Agents Act 2002 for a person to do any of the following as a result of a collusive practice, or to induce or attempt to induce another person by a collusive practice to do any of the following:

- to abstain from bidding; or
- to bid to a limited extent only; or
- to do any other act that might prevent free and open competition.

Severe penalties may be imposed on persons convicted of collusive practices.

The auctioneer has the right to make one bid on behalf of the vendor if the auctioneer clearly and precisely announces that fact prior to the sale.

Tasmania Legislation. An auctioneer conducting a public auction must not appear to acknowledge the making of a bid if no bid was made. A person must not participate in collusive practices by way of making or receiving an unlawful promise to abstain from bidding, not to bid except to a limited extent or do any other thing which may prevent free and open competition.

WA Auction Sales Act 1973 s31 NOTICE.

It is an offence to:

- induce or attempt to induce another person to abstain from bidding by means of a promise, expressed or implied, that the other person will have the right to elect to take over as buyer or to toss or draw lots to establish who is to become the owner;
 - abstain or agree to abstain from bidding as a result of such a promise;
 - knowingly enter or permit or cause to be entered in the auctioneer's record any name other than that of the actual successful bidder;
 - enter in the auctioneer's record the name of the buyer other than that of the actual successful bidder; or
 - in the case of successful bidder supply wrong information as to the name of the buyer to the auctioneer or to any person, firm or corporation on whose behalf the sale is conducted.
- The vendor, or any person on behalf of the vendor, or the auctioneer have the right to make no more than three bids.

© FEBRUARY 2017 Australian Livestock & Property Agents Association Limited All rights reserved.

Unauthorised reproduction in whole or in part is an infringement of copyright.

These Livestock Auction Terms & Conditions of Sale are provided to ALPA members as recommended terms and conditions only.



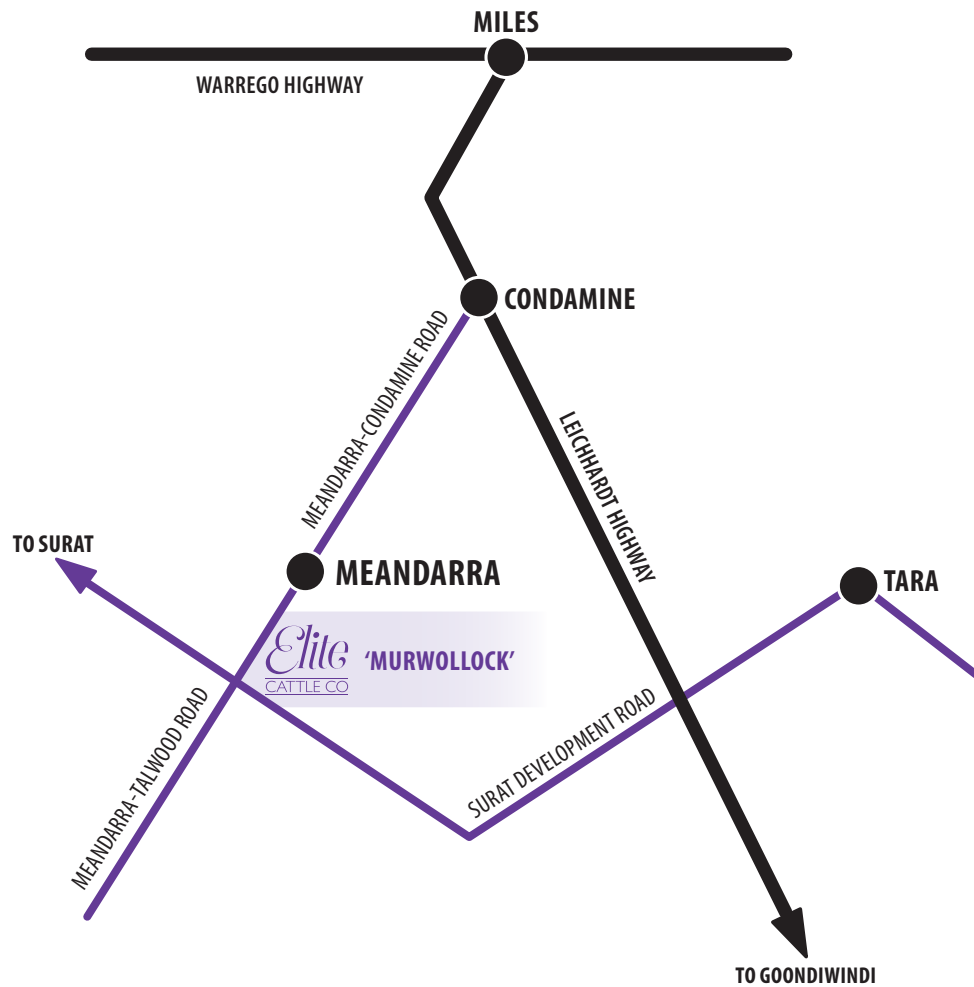
Kim & Glen would like to thank all buyers and bidders for their support of our 2021 Bull Sale.

We wish all buyers the best with their purchases.

We look forward to seeing you next year and wish everyone a safe trip home.



Map



ACCOMMODATION

Please feel free to contact us for assistance with accommodation.

- Meandarra, which is 2km away from 'Murwollock,' has the following options:
 - Sara Street Motel 07 4665 6121
 - Royal Hotel Meandarra 07 4665 6183
- 'Murwollock' is 3 hours from Toowoomba, 2 hours from Goondiwindi or Roma, 1 ½ hours from Dalby and 1 hour from Miles.



Elite Payday

Purchased by
Price Charolais,
Aramac



Elite Pandemic

Purchased by
Rosemount Grazing,
Barcaldine



Elite Prosecutor

Purchased by
J & J Atkinson,
Dingo



Elite V8 Power

Purchased by
Coggan Farms,
Meandarra

HIGH SELLERS 2020 SALE



Glen Waldron & Kim Groner

Glen 0438 662 117 Kim 0433 333 805

info@elitecattleco.com.au

www.elitecattleco.com.au